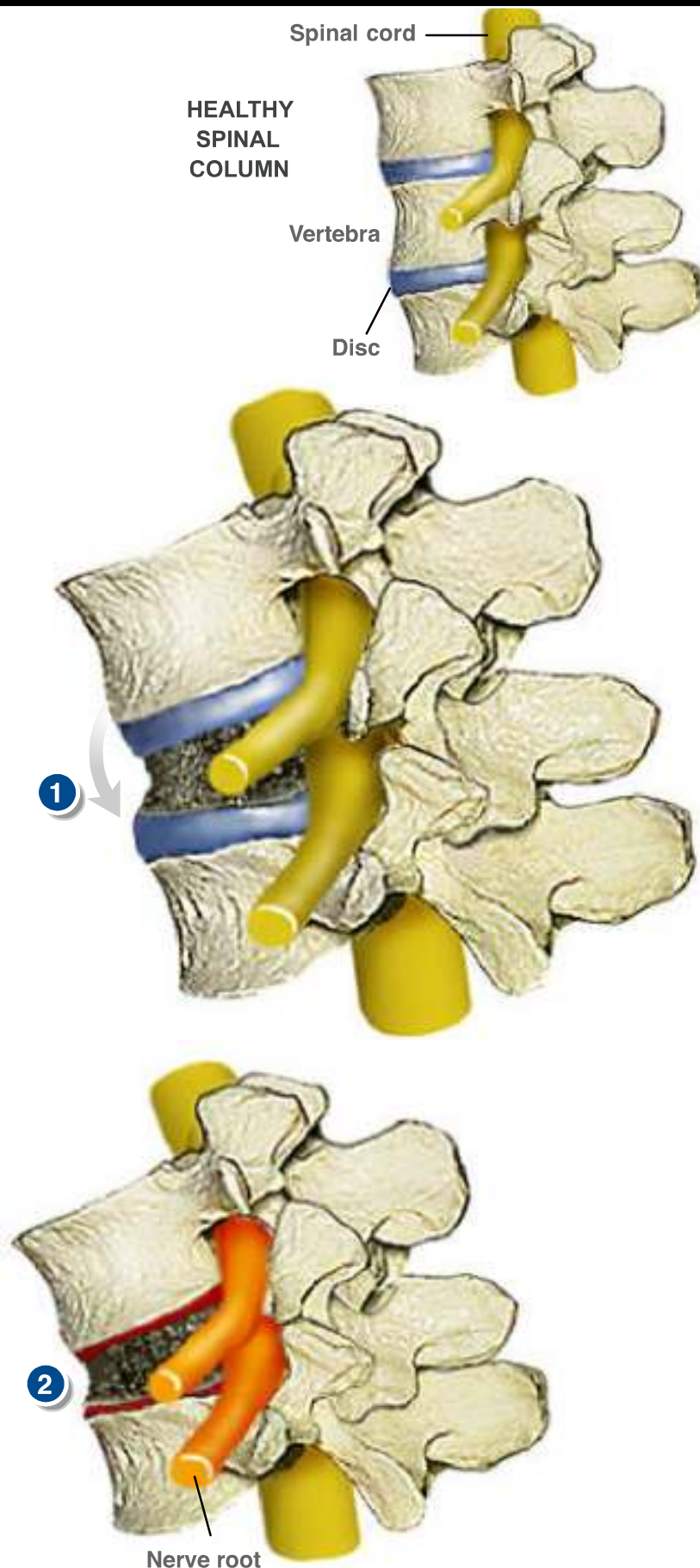


## METASTATIC CANCER



### Overview

In most cases, spinal metastatic cancer is caused by cancer transferring to the vertebrae from somewhere else in the body. Over time, the spinal column collapses, causing deformity and constant pain.

### Cancer Reaches Spine

The condition begins when cancer cells travel through the blood stream to a vertebra.

#### 1. Vertebral Bone Deformed

The cancer destroys and dissolves the vertebral bone. The diseased bone becomes weak and deformed.

#### 2. Discs Collapse

The cancer spreads to the discs above and below the vertebra, causing the discs to collapse. The collapse squeezes the nerve roots, causing pain.