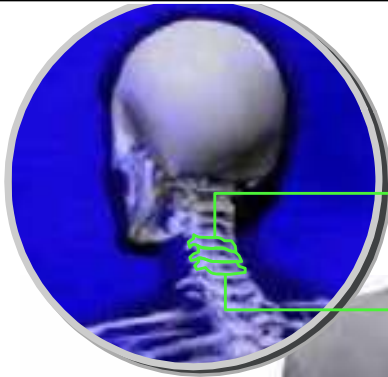


CERVICAL RADICULOPATHY



Symptoms

The nerve roots leaving the neck area serve the arms. When a cervical root is injured, pain, weakness, numbness or tingling may be felt in the shoulder, arm

C6 level damage

C7 level damage

C5 level damage



Overview

The spinal cord branches out to all parts of the body. The part of a nerve that connects to the spinal cord is called a nerve root. If one of these roots is injured or pinched, pain, weakness, numbness or tingling may be felt in the part of the body served by that nerve.

Herniated Disc

When a spinal disc ruptures, it may press on a nerve root.



Spinal Stenosis

The bones creating the spinal canal may grow inward, pinching a nerve root.



Degenerative Disc Disease

If a spinal disc weakens, vertebral bones above and below may touch, pinching nearby nerve roots. Bony spurs also may press on the nerves.

